

JADO

JADO - S6 Kit USER MANUAL



JADO is committed to excellence and quality. We proudly present the all-new JADO S6 Series. This set is a non-retail edition and may differ from the final version. Thank you for supporting JADO SMART—always by your side, moving forward together.

About JADO-S6

All-New JADO-S6 Motorcycle Smart Navigation & DVR

The JADO-S6 is the next-generation smart navigation recorder, purpose-built for motorcycle travel. Featuring a brand-new design with a 6-inch ultra-bright display (up to 1800 nits), it combines safety, intelligence, and convenience to deliver an unprecedented riding experience.

BMW Navigation Mount Compatibility: Equipped with BMW's quick-release module, the device fits directly onto the original navigation base, enabling fast and effortless installation or removal.

Real-Time Vehicle Data Display: View key riding information—including speed, RPM, gear position, fuel level, coolant temperature, and tire pressure—directly on the device screen, eliminating the need for extra gauges and ensuring centralized data access.

BMW Wonderwheel Control: Integrated with BMW handlebar buttons and multifunction wheel, allowing riders to switch navigation, music, menus, and more without looking down or touching the screen.

Compatible with BMW OEM Protocol: Dedicated protocol integration ensures accurate data reading, responsive controls, and smooth interaction—delivering a truly seamless experience with the BMW onboard system.



Packet Content



S6 *1



Jado Quick-Release Kit *1



BMW Quick-Release Module Kit *1



Front Camera *1



Rear Camera *1



Regular Power Cable *1



Tool Kit *1



64Gb Micro SD Card *1



Nylon Tie *3



Standard Mounts Kit *1



Triple-Clamp Mounts Kit *1



Handlebar Mounts Kit *1



Tire Pressure Sensor *2



Remote Control *1



User Manual *1

BMW Quick-Release Module

JADO-S6 Series for BMW Motorcycles

Tailored for BMW bikes, the JADO-S6 integrates seamlessly with the original system, supporting OEM quick-release, real-time vehicle data, and handlebar control.

BMW Quick-Release Module: Fits BMW' s OEM navigation base for fast install and removal.

Live Data Display (BMW Mode) : Speed, RPM, gear, fuel, temperature, tire pressure,etc. All in one screen.

BMW Wonderwheel Control: Navigate menus, music, and maps via BMW buttons or Wonderwheel Control.

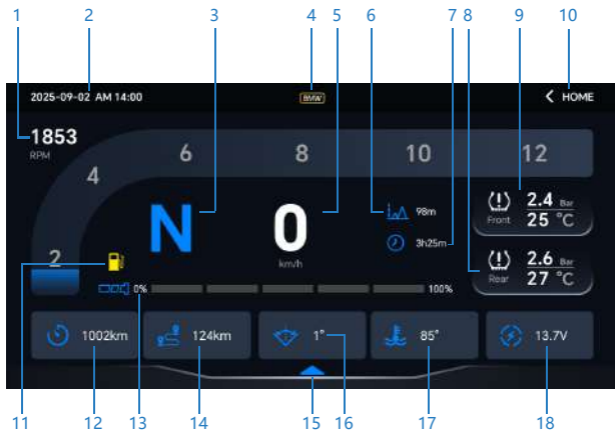
Seamless Integration: Accurate data, smooth response, OEM-like experience.



BMW Mode

Live Data Display

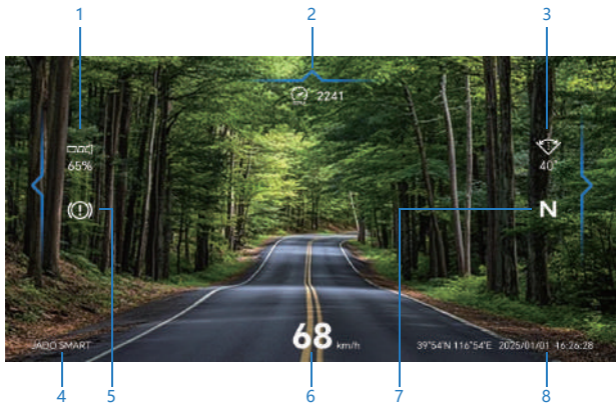
- 1.RPM data
- 2.Date & Time
- 3.Gear
- 4.Currently in BMW Mode
- 5.Speed
- 6.Altitude
- 7.Riding Time
- 8.Home Button
- 9.Front Tire Pressure & Temperature
- 10.Rear Tire Pressure & Temperature
- 11.Fuel Warning
- 12.ODO
- 13.Throttle Position
- 14.Trip Distance
- 15.Bottom Menu
- 16.Angle Data
- 17.Engine Temperature
- 18.Battery Voltage



BMW Video-Data Fusion

In BMW Mode, the S6 leverages its powerful data processing capabilities to overlay information from the BMW motorcycle directly onto the recorder's screen. With this advanced feature, you can export riding videos in real time and analyze each frame, viewing vehicle speed, RPM, throttle position, braking status, lean angle, gear position, and GPS coordinates at any given moment.

- 1.Throttle Position
- 2.RPM data
- 3.Angle Data
- 4.Video Watermark
- 5.Brake Status
- 6.Speed
- 7.Gear
- 8.Latitude and Longitude & Date &Time



Jado Quick-Release Kit

JADO Quick-Release Kit

The S6 series can be equipped with JADO' s proprietary quick-release mount, ensuring secure device attachment while allowing effortless and rapid installation or removal. The universal quick-release base makes setup simple—taking only a few seconds—offering both safety and flexibility, and delivering an enhanced riding experience for motorcyclists.

The JADO Quick-Release Kit is compatible with standard mounts, triple-clamp mounts, and handlebar mounts, offering universal fit across all motorcycle models.



Cameras

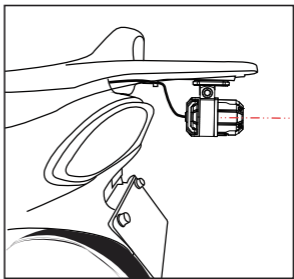
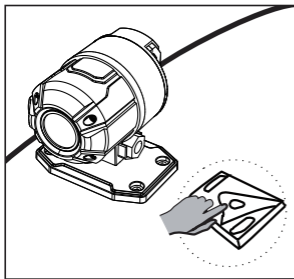
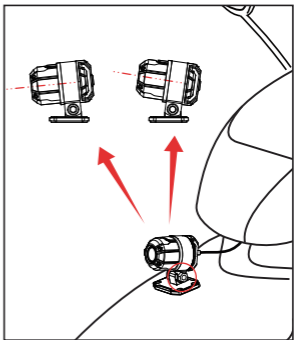
◆ Front/rear camera installation instructions

- The camera should be installed in a location that does not interfere with driving operation and is less affected by the vibration and shaking of the vehicle.

● Installation Method:

- ① Loosen the fixing screws of the camera holder and adjust the camera angle (up and down) according to the mounting position.
- ② Clean the stains on the mounting position and degrease it with a commercially available alcohol cleaner.
- ③ Press the double-sided adhesive tab on the camera bracket to secure it in the mounting position.

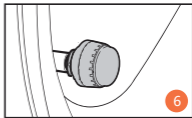
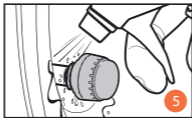
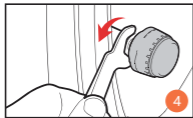
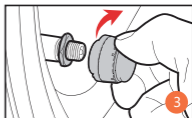
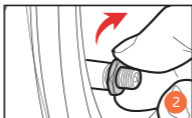
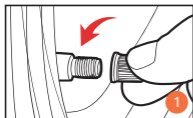
*Note: To ensure mounting strength, make sure there is no gap on the pasted surface. Do not apply load to the camera bracket for 24 hours after pasting.



Tire Pressure Sensor

◆ Tire pressure sensor installation instructions

- When mounting the tire pressure sensor, make sure that the mounting location is sufficiently dry. The sensor may malfunction if there is moisture, etc. on the valve at the time of installation.
- Installation Steps:



- ① Remove the pulse cover of the tire.
- ② Please rotate the hexagonal nut supplied with the product clockwise to the bottom of the valve.
- ③ Tighten the tire pressure sensor clockwise.
- ④ Using the special wrench supplied with the product, turn the nut counterclockwise for tightening.
- ⑤ Check for air leaks by pouring soapy water around the valve and tire pressure sensor.
- ⑥ Make sure that the tire air pressure value and temperature value are displayed normally on the screen of the main unit.

*Note:

- ① This part is an optional part, please check whether the purchased product package includes this part. If it is not included, installation is not required.
- ② To use the tire pressure function (TPMS function), you need to pair with the product first.

Remote Control

- BCM: Remote Control (Optional):

The optional remote control enables convenient operation of the following functions: interface switching, incoming call management, application selection, and other system controls.

1. long press the leftmost photo button and the rightmost video lock button to enter pairing mode, the indicator light red and blue alternately flashing 5 times;
2. Short or long press the button battery power higher than 40% light blue, power lower than 40% light red.

Machine Interface	Short press	Long press 2 seconds
Instrument Interface	1. Incoming call: short press to answer the call; 2. Play music status: previous song switching	1. Incoming call: short press or long press function has no effect 2. Incoming call: long press to lock the current front/rear camera to record video.
	Play music status: play/pause music	1. Interconnection status with cell phone: Meter a interconnection→DVR 2. Not interconnection status with cell phone: Meter→DVR
	1. Incoming call: Short press to reject the call; 2. In the middle of a call: Short press to hang up the call; 3. Playing music status: Next song switching	1. Incoming call:short press or long press function has no effect 2. Incoming call:long press front/rear camera to take one photo each.

Product Specifications

Size	6.0 inches
Wi-Fi	2.4Ghz+5Ghz dual band
Connection	Support Carplay/Auto/WiFi video
Operation	Full-screen touch control
G-Sensor	Support
Parking monitoring	Support
Photosensitive chip	Built-in automatic light sensor, supports 5-segment brightness auto adjustment
Video format	TS
Photo format	JPEG
Video encoding format	H.265/H.264
GPS	Five-Constellation GNSS
Dash cam	Front and rear
Operating temperature	-4~+158°F/-20~+70°C
Waterproof Dustproof	IP69K
APP	Support
Firmware upgrade	OTA / Memory card upgrade

